



MALANDRINO III°

MALANDRINO III° DA IZANO IT019500148631
 Born 06-10-2000 Az. Agr. Massari F.Ili Izano Cremona Italy

N° 1 IN ITALY



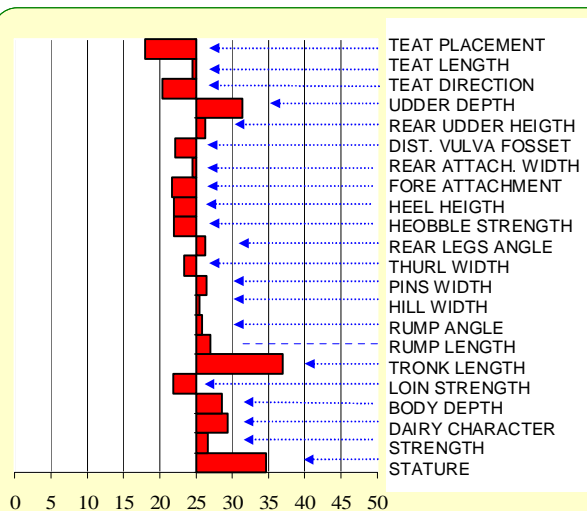
Sire		PGS	
MALANDRINO CE 24552 VG 89		FIORENTINO CE 14420 G+ 83,5	
		PGD	
		MALANDRINO CE 10075 VG 85	
		N° Year days Milk F% P%	
		8 1998 270 3671 7,3	
		MGS	
		ALESSIO CR 721 PUNTI 89	
Dam		MGD	
RESICA CR 1574 VG 86		AZ. 35 CE 24597 G+ 81	
N° Year days Milk F% P%		N° Year days Milk F% P%	
1 1998 270 3237 8,0 4,5		6 1998 270 4379 7,19 4,00	
2 2000 270 5178 7,4 4,2			
3 2001 270 5118 7,6 4,3			
4 2002 270 4510 7,9 4,6			
5 2004 270 5027 7,8 4,4			
GENETIC INDEX September 2006		GENETIC INDEX June 1997	
PKM Milk F Kg P Kg		PKM Milk F Kg P Kg	
139,71 728,58 42,44 27,20		67,08 414,27 24,11 13,70	

GENETIC INDEX date ANASB

	n° 09 September 05	n° 10 March 06	n° 11 September 06
PKM	114,60	140,93	155,69
Milk	562,17	667,40	733,97
Protein Kg	23,79	28,32	31,31
Protein %	-0,03	-0,07	-0,06
Fat Kg	30,74	39,55	43,46
Fat %	-0,54	-0,48	-0,46
N. of daughters	15	37	52
N. of lactations	15	39	58
N. of farms	4	8	16

With the September proofs MALANDRINO III° confirms his excellent indexes. After three proofs and the increase of the number of his daughters the positive trends in all his proven characters is astonishing. All his genetic potential can be found in his pedigree: his mother RESICA CR 1574 is an extraordinary buffalo both in production and type. His father MALANDRINO CE 24552 is a bull, used for natural inseminations, who, in the first Genetic Proof Index published by AIA and ANASB in 1997, had 25 daughters among the first 50 female buffalos indexed in Italy. The union of these two blood lines has given fuel for the explosion of Malandrino III°. I have seen about 20 of his daughters and I was impressed by the incredible productions, + 20-30% of productive capacity in comparison to the herd average. The daughters of Malandrino III are tall, with a long trunk, and correct udders. This sire will certainly leave an important imprint in the Italian buffalo selection.

Giovanni Binotti
Sire Analyst Co.F.A.

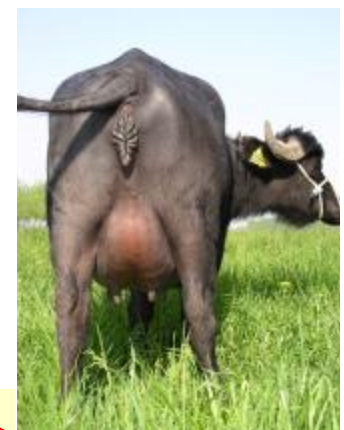


MORPHOLOGY EVALUATION

The graphic **IS NOT** a **GENETIC INDEX**

The graphic represent the **EVERAGE** of the linear evaluation for each morphology traits of **MALANDRINO III°** daughters.

GERARDO
DA IZANO
FARM
CREMONA
ITALY



Malandrino III° mother